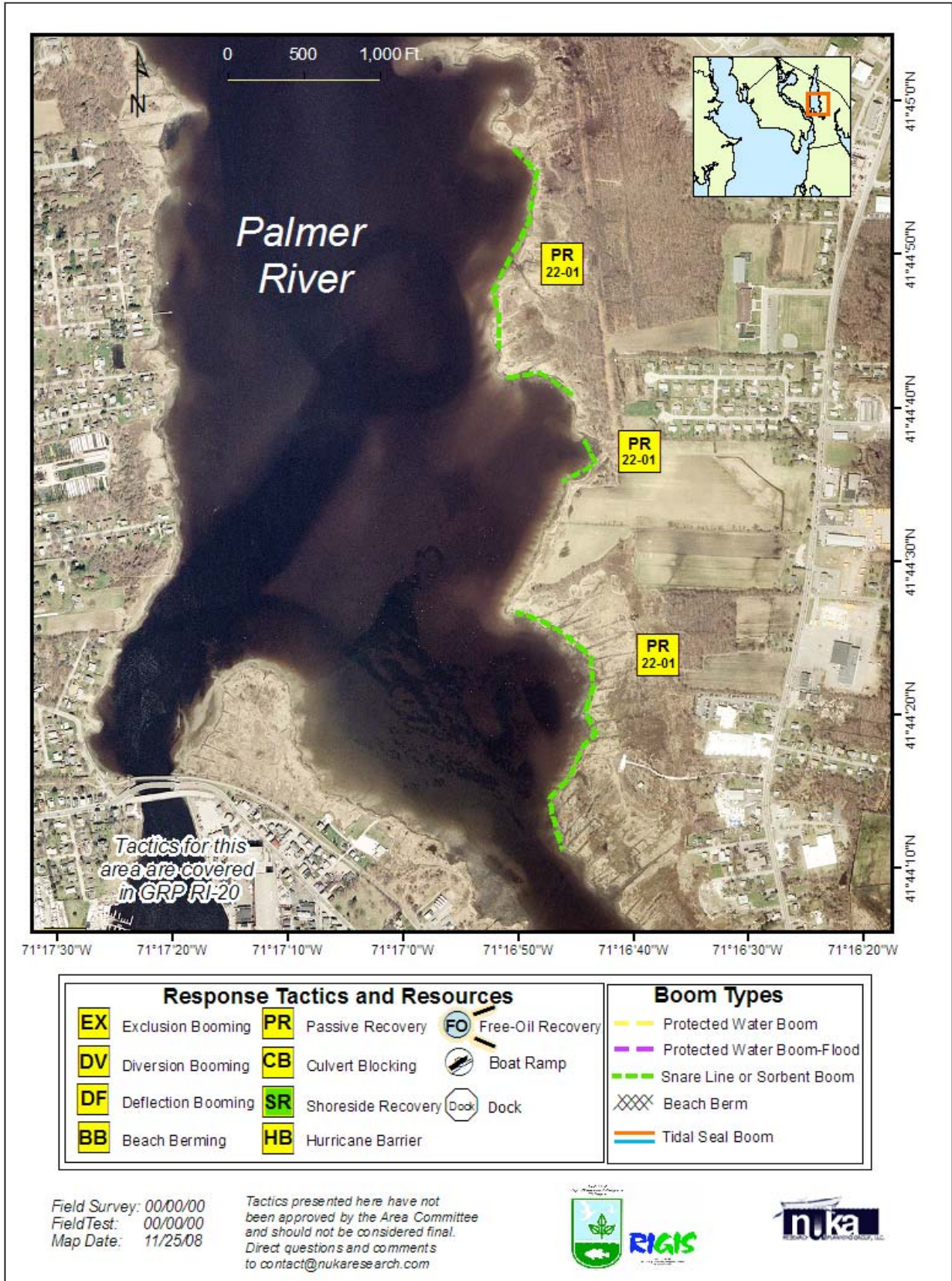



Rhode Island Geographic Response Plan – Palmer River RI-22




Rhode Island Geographic Response Plan – Palmer River RI-22

ID	Location and Description	Response Strategy	Implementation
RI-22-01 	Palmer River Marshes Various locations	Passive Recovery Place passive recovery tactics to recover oil and prevent it from entering sensitive marsh areas along the Palmer River.	Deploy snare or sorbent boom along marsh areas. Remove oiled sorbents at low tide and replace with new material as necessary.



Rhode Island Geographic Response Plan – Palmer River RI-22

ID	Response Resources	Staging Area Site Access	Resources Protected	Special Considerations
RI-21-01 	<p>Deployment</p> <p>Equipment</p> <p>2000 ft. snare or sorbent boom 200 anchor stakes 1 shallow-draft vesse;</p> <p>Personnel/Shift</p> <p>8 shoreside responders, deployed from shallow-draft vessel</p>	<p>Stage equipment at Barrington River and transport to site via marine waters.</p> <p>Chart: 13224-1</p>	<p>Fish-anadromous, catadromous, finfish, shellfish Birds-waterfowl, seabirds; Osprey Habitat-fringe marshes, tidal flats Reptile-Diamondback Terrapin (rare species) Human use-recreational boating, recreational fishing, Yacht Club, moorings and docks</p>	<p>Use snare boom for persistent oils and sorbent boom for non-persistent oils.</p> <p>Shoreside responders should use caution not to damage marsh fauna while accessing site.</p> <p>Surveyed: Tested: not yet</p>



Site photographs and Contact information



Barrington
Harbormaster
(401) 437-
3930

Barrington
Fire
Department
(401) 437-
3940

